

# Rigid Fixed Batten Stone Cladding System

Stone ( 150 / 200mm ) veneer over 7.5mm Eterpan substrate sealed with 3 coats of Mulseal sealant on 40mm H4 battens @ 400c/c & Thermakraft Watergate Plus on 90 x 90 H1 studs @ 400c/c

Galv. EH veneer ties @ 300c/c horizontal @ 400c/c vertical. ( by Engineer )  
100mm 12g Tek screws screwed through Eterpan, batten and into stud

Mulseal Sealant 3 Coats applied to 7.5mm Eterpan

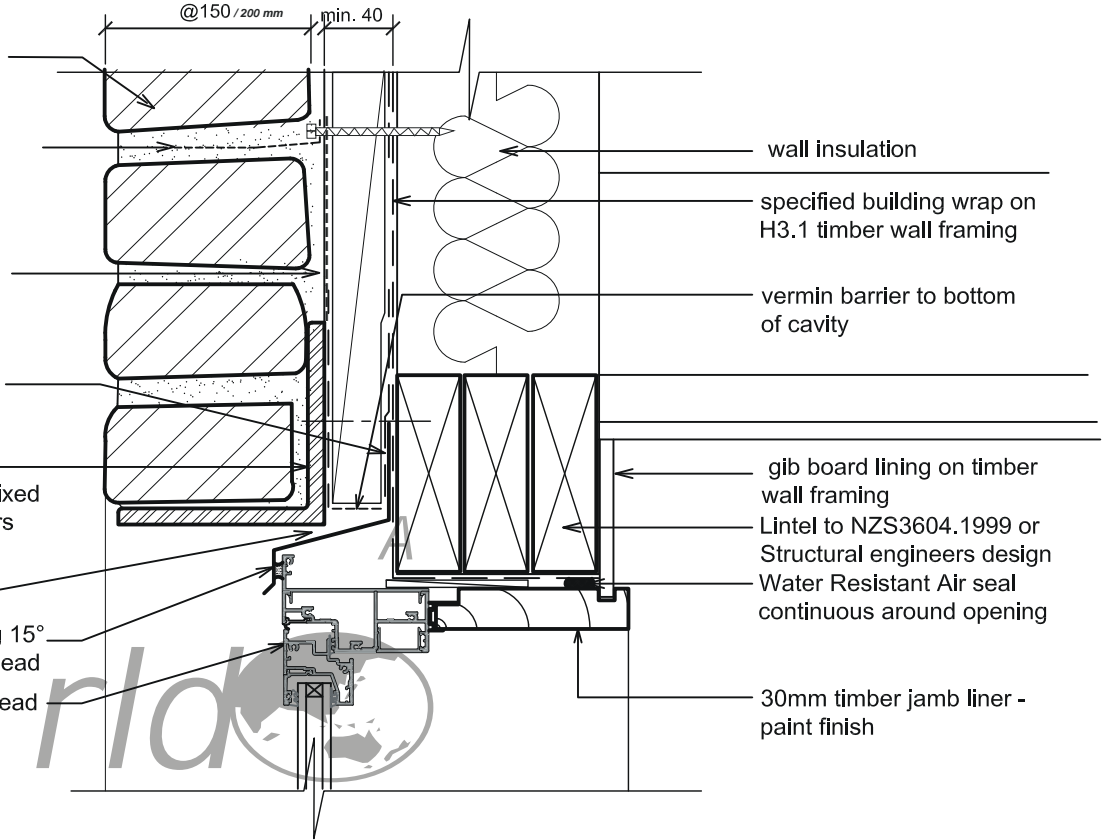
Flexible flashing tape lapped over building wrap & window head flashing

Galv. Steel Angle lintel to Structural engineers design fixed to lintel through dpc & packers spec. paint finish

5mm min. drainage gap

P.C. aluminium head flashing 15° slope & stop ends, lap over head

Typical P.C. Alum. window head frame (Double Glazing)



HEAD - SECTION

P.C. Aluminium back flashing fixed to jamb

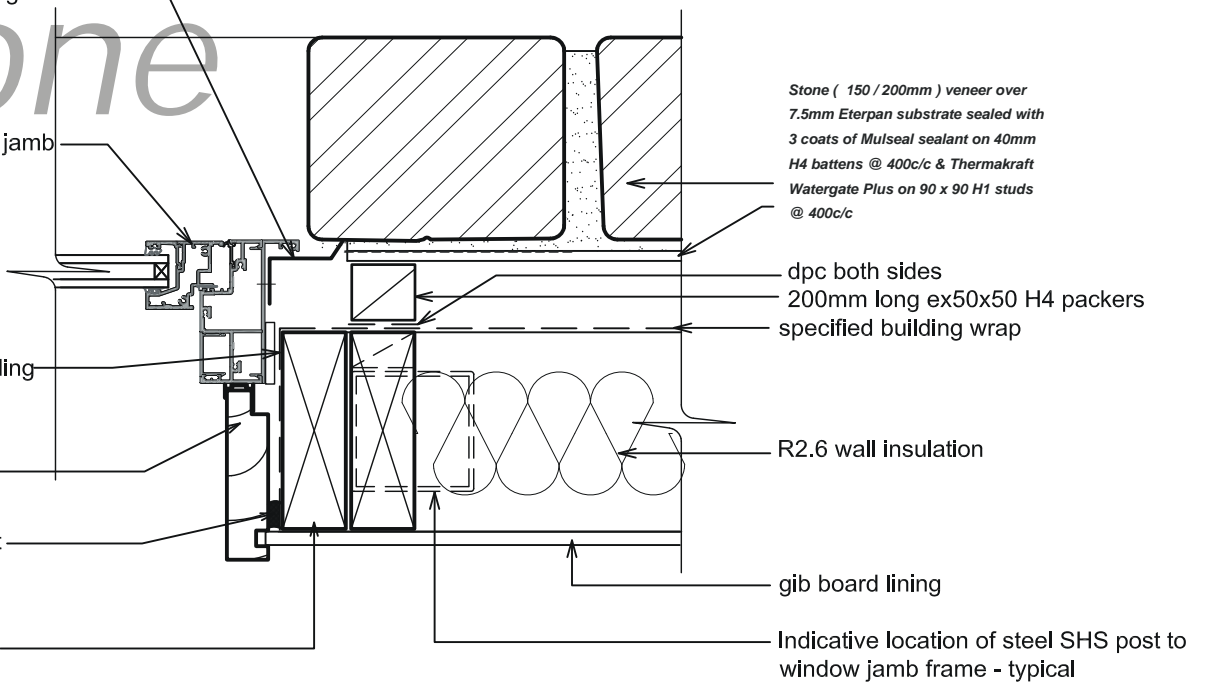
Typical P.C. Alum. window jamb frame (Double Glazing)

Flexible flashing tape/ building wrap into frame opening

30mm timber jamb liner - paint finish

Continuous Water resistant air seal

ex.50mm H3.1 timber wall framing



JAMB - PLAN

## TYPICAL ALUMINIUM WINDOW DETAILS STONE VENEER

SCALE 1 : 5

All details are guidelines and to be verified by Engineer